



Dolphins

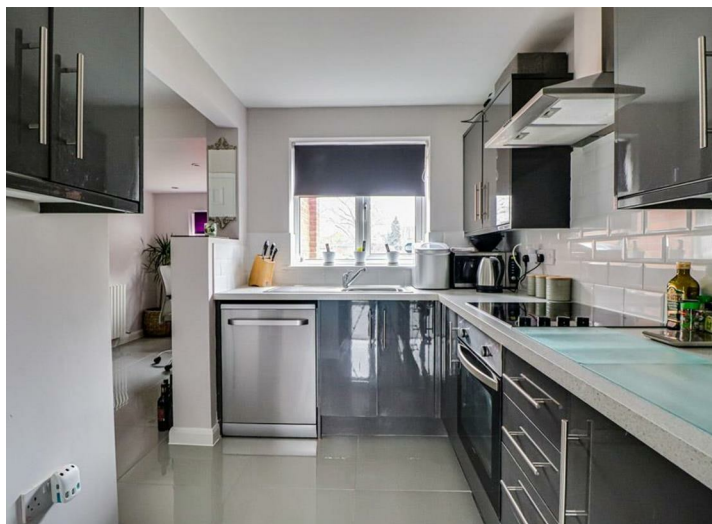
Westcliff-on-Sea

£280,000

Price Guide



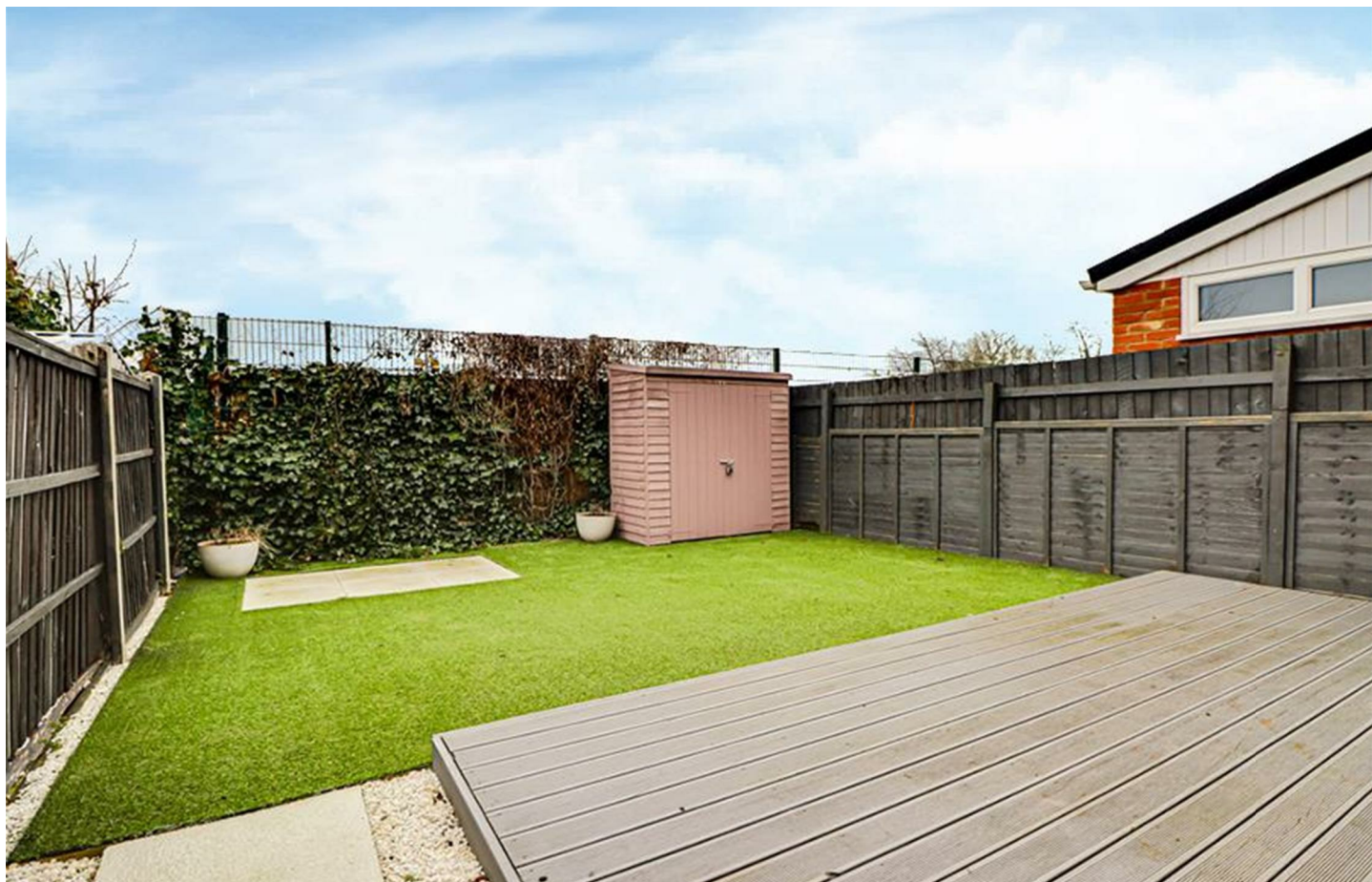
Dolphins



Description

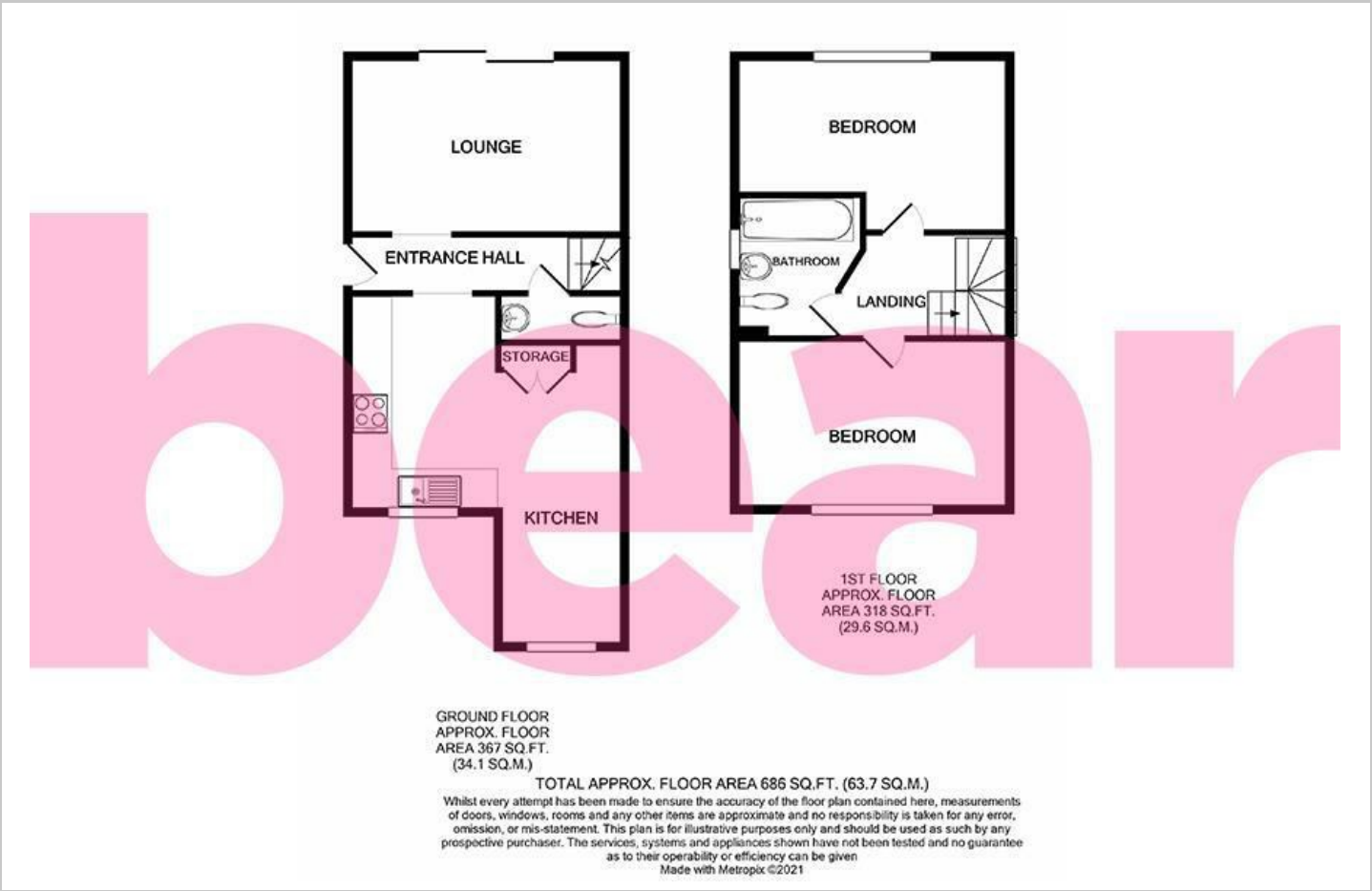
* £280,000 - £290,000 * Beautifully presented two DOUBLE bedroom semi-detached house with a generous REAR GARDEN and AMPLE OFF-STREET PARKING. Boasts access to the A127 as well as schools and amenities.

- Perfect Starter Home for First Time Buyers
- Generous Lounge Leading to the Rear
- Beautiful Rear Garden and Off-Street Parking
- Close to Schools
- Access to Bus Links and London Southend Airport
- Two Double Bedrooms
- Open Kitchen/Diner
- Convenient Access to the A127
- Not Far From Amenities
- Well Presented Throughout





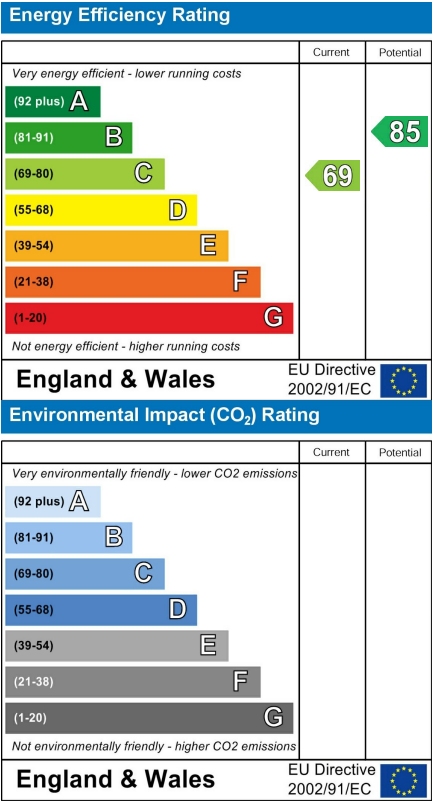
Floor Plan



Area Map



Energy Efficiency Graph



Viewing

Please contact our Southend-on-Sea Office on 01702 811211 if you wish to arrange a viewing appointment for this property or require further information.

These particulars, whilst believed to be accurate are set out as a general outline only for guidance and do not constitute any part of an offer or contract. Intending purchasers should not rely on them as statements of representation of fact, but must satisfy themselves by inspection or otherwise as to their accuracy. No person in this firms employment has the authority to make or give any representation or warranty in respect of the property.

Beech House, 1 Journeymans Way, Temple Farm Industrial Estate, Southend-on-Sea, Essex, SS2 5TF

Office: 01702 811211 info@bearestateagents.co.uk www.bearestateagents.co.uk